

# State of Wyoming Corner Record

(In compliance with the CORNER PERPETUATION AND FILING ACT, Wyoming Statutes, 1997, Section 33-29-140, et. seq. and the Rules and Regulations of the Board of Registration for Professional Engineers and Professional Land Surveyors)

Reverse side of this form may be used if more space is needed.

Record of original survey and citation of source of historical information (if corner is lost or obliterated). Description of corner monumentation evidence found and/or monument and accessories established to perpetuate the location of this corner. Sketch of relative location of monument, accessories, and reference points with course and distance to adjacent corner(s) (if determined in this survey). Method and rationale for reestablishment of lost or obliterated corner.

FOUND: FOUND 2 1/2" ALUMINUM CAP AS SHOWN.

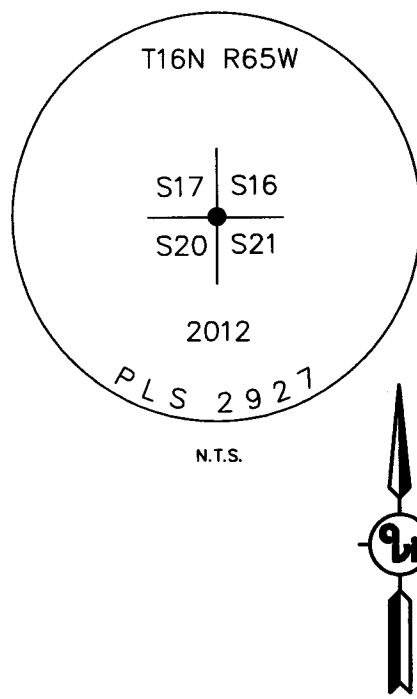
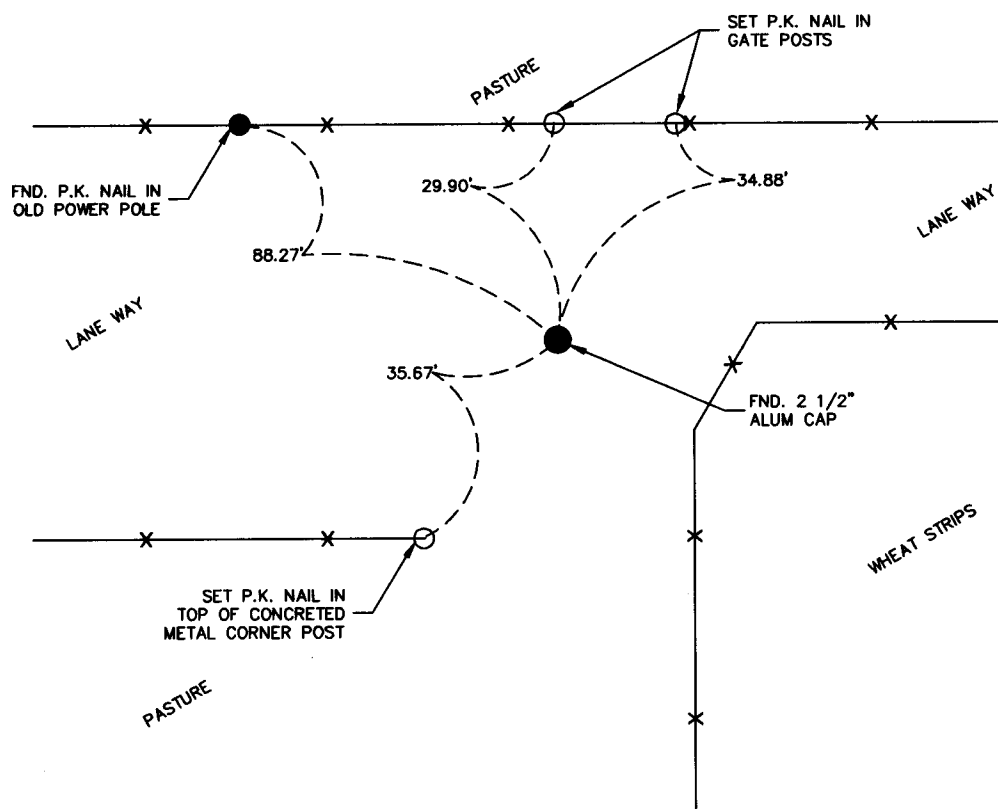
G.L.O. RECORD: EDWIN JAMES, DEPUTY SURVEYOR, JUNE 1870  
80.00 CHAINS, SET A GRANITE BOULDER 16x8x4 FOR CORNER  
TO SECTIONS 16,17,20,21.

SET: NOTHING



RECP #: 660726  
RECORDED 5/8/2015 AT 1:24 PM BK# 2443 PG# 1162  
Debra K. Lathrop, CLERK OF LARAMIE COUNTY, WY PAGE 1 OF 1

REFERENCES: FOUND AS SHOWN



Date of Field Work: JULY 2013 Office Reference: 2-3516.13

### CROSS INDEX DIAGRAM

A	1	2	3	4	5	6	7	8	9	10	11	12	13	14	15	16	17	18	19	20	21	22	23	24	25
B																									
C	6		5						4											3					2
D																									
E																									
F																									
G	7		8						9											10					11
H																									
I																									
J																									
K																									
L	18		17						16											15					14
M																									
N																									
O																									
P	19		20						21											22					23
Q																									
R																									
S																									
T	30		29						28											27					26
U																									
V																									
W																									
X	31		32						33											34					35
Y																									
Z																									

Firm/Agency, Address  
Adam E. Deschler  
A.V.I., p.c.  
1103 Old Town Lane, Ste.101  
Cheyenne, WY 82009  
Telephone Number: (307) 637-6017

This corner record was prepared by me or under my direction and supervision.  
**SEAL & SIGNATURE**



Corner Name: SECTION CORNER Section: 17|16 2021 T 16 R 65 ; 6th P.M. Cross-Index No.: N-9  
SBRPEPLS/PLSW: March 1994